



COOK COUNTY
BUREAU OF
ECONOMIC
DEVELOPMENT



Regionwide Community Information Exchange

December 8, 2023

Kick-Off Informational Webinar

Welcome & Introductions

Please Add In Chat:

- **Your Name**
- **Your Organization**
- **What are you hoping to learn about a CIE from today's webinar?**

Webinar Logistics

- Thank you for your presence!
- Please type your questions in the Q&A
- Please be respectful, curious, and kind
- The webinar is being recorded

Introducing the Regionwide CIE Leadership Team



Mervin Dino, Assistant Commissioner, Bureau of Community Health;
mervin.dino@cityofchicago.org
April Walton, Project Manager-Contractor, Department of Health;
april.walton@cityofchicago.org



Dominic Tocci, Deputy Bureau Chief; dominic.tocci@cookcountyil.gov
Dena Al-Khatib, Project Director; dena.al-khatib2@cookcountyil.gov



Waldo Mikels-Carrasco, Director, Center for Health Information & Innovation; Co-Director, Data Across Sectors for Health (DASH);
waldo.mikelscarrasco@iphionline.org

Zoom Poll

- What area do you represent in the Homelessness Service Community?

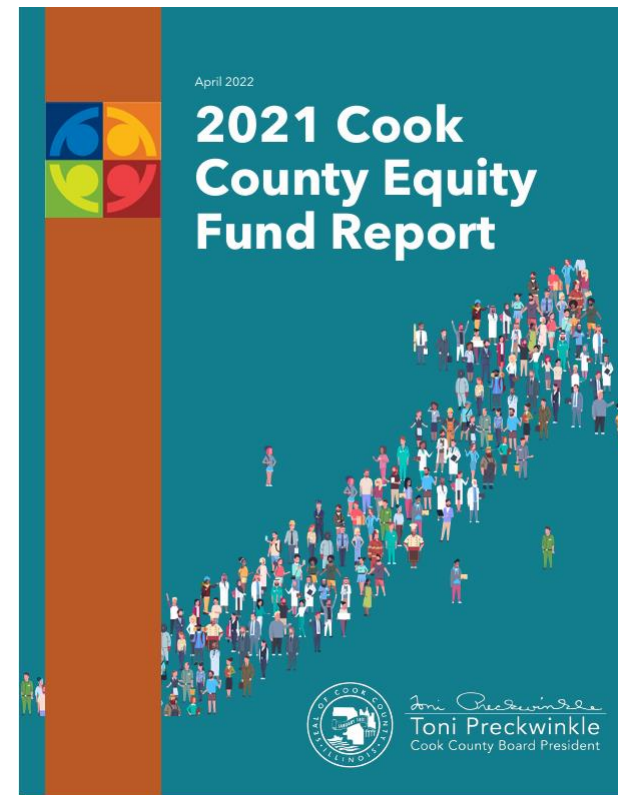
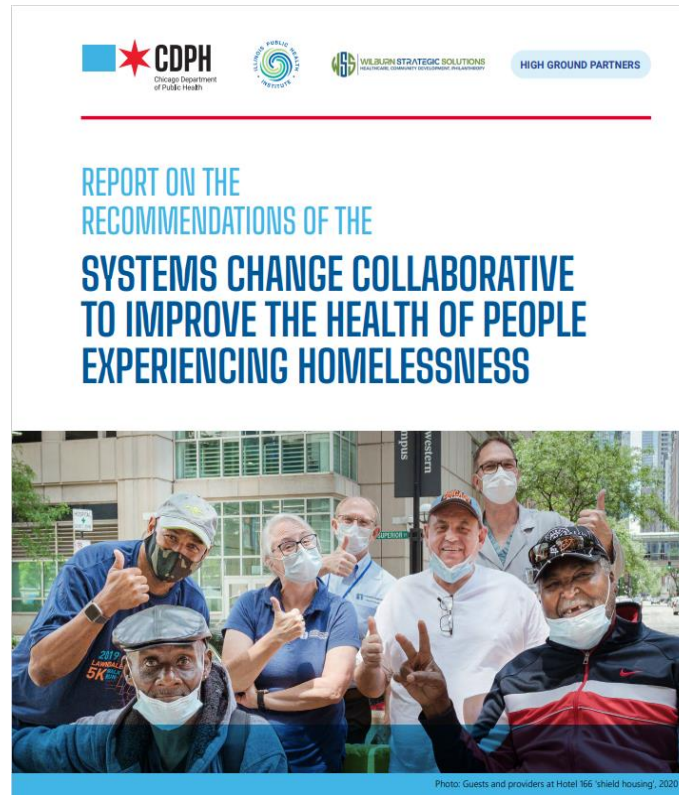
Regionwide CIE: Framing Statement

The City and County have partnered to launch the initial planning and development of a **Regionwide Community Information Exchange (CIE)**, a care coordination platform serving as a data bridge between healthcare and social service providers.

Through a pilot centered on **people experiencing homelessness**, this is the start of a multi-year effort to build a system that enables improved coordination of data and service delivery across the continuum of care for Chicagoans and Cook County residents.



The CIE is an outgrowth of CDPH's Systems Change Collaborative to Improve the Health of People Experiencing Homelessness and Cook County's Equity Fund Task Force.



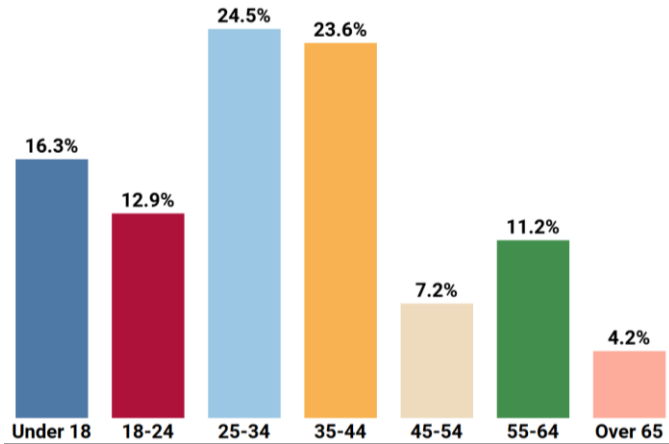
Point in Time Count in Chicago and Suburban Cook County, 2023

Annual assessment of sheltered and unsheltered people experiencing homelessness at one moment in time.

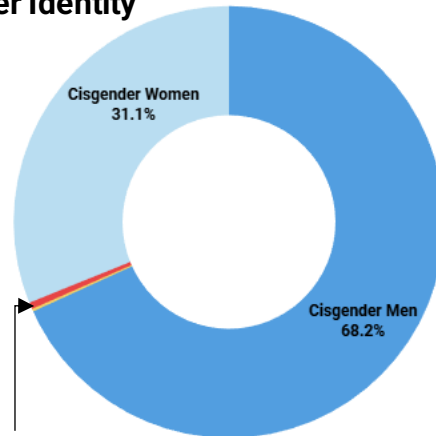
City of Chicago: 6,139 experiencing homelessness



Percent Experiencing Homelessness by Age Group in Years

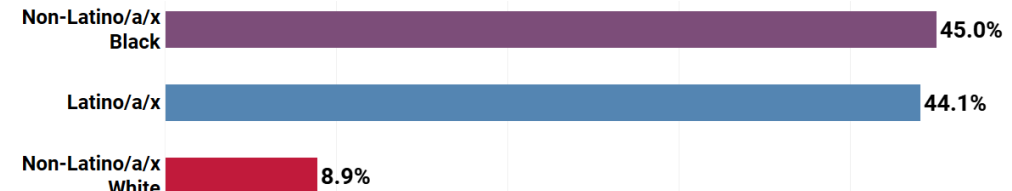


Percent Experiencing Homelessness by Gender Identity



Individuals Identifying as Transgender or a gender other than singularly woman are man <1.0%

Percent Experiencing Homelessness by Race and Ethnicity*



*Non-Latino/a/x AI/IN, Asian, NH/PI, and multiple races comprised the remaining 2.0%

Suburban Cook County: 1,056 experiencing homelessness



Sources: Department of Family & Support Services, Alliance to End Homelessness in Suburban Cook County

Introducing the Illinois Public Health Institute (IPHI)

- BED and CDPH are aligning our planning efforts to create a unified Regionwide CIE plan
- CDPH & BED each selected IPHI as the Lead Consultant, funded by Centers for Disease Control and Prevention and ARPA grants, respectively
- IPHI selected due to deep expertise at the intersection of CIE and homelessness
- Co-operates Data Across Sectors for Health ([DASH](#)), a national initiative that helps communities share data across health and social service sectors



IPHI Team

Waldo Mikels-Carrasco
Project Director

Center for Health
Information Sharing and Innovation

Rashidat Balogun
Sr. Program Manager

Center for Health
Information Sharing and Innovation

Catherine Gillis
Program Research and
Content Manager

Center for Health
Information Sharing and Innovation

Precious McNeil
Program Assistant

Center for Health
Information Sharing and Innovation

With additional outreach, engagement, and communications support from **APEX Direct, Inc.**

Joi Ross, CEO
Strategic Comzunication,
Engagement & Training

APEX Direct, Inc.

Hamdi Ali
Project Director
Stakeholder Engagement
& Outreach

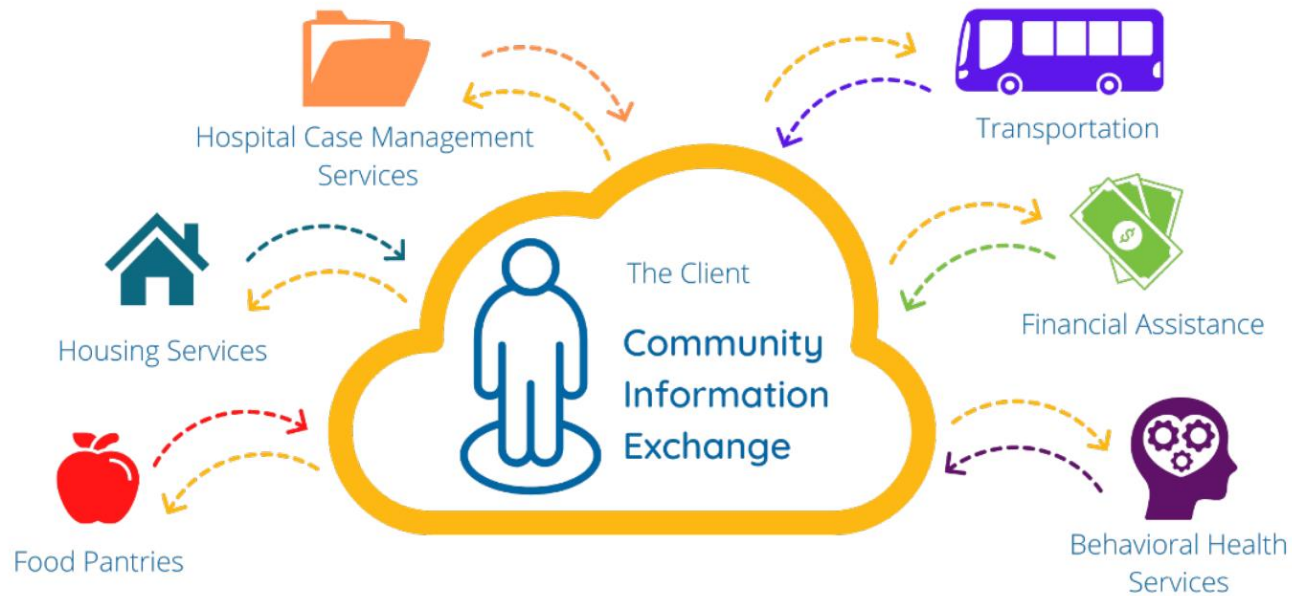
APEX Direct, Inc.

Suzette Tay Lee
Senior Project Director
Stakeholder Engagement
& Outreach

APEX Direct, Inc.



What is a Community Information Exchange?



- **Longitudinal Client Record**
 - Look up & creation
- **Closed-loop referral system**
 - Electronic referrals on behalf of client
 - Visibility to referral/service outcomes
- **Data sharing capabilities**
 - Agency to agency /Case Manager to Case Manager
 - Community wide data collection and analysis
- **Social Determinants of Health (SDOH) assessment tools**
 - Helps guide care manager actions based on social needs and risks

Proposed Governance Structure



Regionwide Oversight Committee



Center for Health Information Sharing & Innovation

Advisory Council



WORKGROUPS



Initial Workflow Design for Persons Experiencing Homelessness



Data Standards & Technology



Legal & Governance Framework



Business Model & Sustainability Strategy



CIE Planning Timeline

Winter 2023 /
Early 2024

Spring
2024

Summer
2024

Fall
2024

Winter
2024 / 2025

Stakeholder Engagement

- In-depth landscape review
- Community outreach
- Establish Advisory Council & Workgroups
- Begin journey mapping

Homeless Pilot Planning & Design

- Facilitate workgroups
- Conduct CIE framework design meetings:
 - Data
 - Technology
 - Legal
 - Governance
- Refine journey mapping

Framework Build-out

- Establish secure data-sharing processes
- Select a CIE operator & determine operating costs
- Develop a sustainability strategy.

Implementation Phase

Your Input Matters!



Share Your Experiences

Virtual interviews, in-person listening sessions & surveys



Attend Community Meetings

Meeting dates & locations will be announced in 2024



Join the Decision Making

Serve on the advisory council or a workgroup

Questions & Answers

- **Questions about today's presentation?**

Type them in the Q&A.

- **Questions about the interview process or eagerness to discuss advisory roles?**

Interview process: Catherine Gillis, catherine.gillis@iphionline.org

Advisory group & subcommittees: Rashidat Balogun, rashidat.balogun@iphionline.org



COOK COUNTY
BUREAU OF
ECONOMIC
DEVELOPMENT



Thank You!